

## MONOCOUCHE XF STANDARD DETAILS

XF Best Practice Installation Guide

XF One Coat Installation Guide

XF Render Thickness Exposure Map

MRSXF Base Bead Detail

MRSXF External Corner Detail

MRSXF Internal Corner Detail

MRSXF Render Stop / Material Junction Detail

MRSXF Movement Joint Detail

MRSXF Window & Door Head Detail

MRSXF Window & Door Jam Detail

MRSXF Window Cill Detail

MRSXF Soffit Junction Detail

MRSXF Copings & Capping's Detail

MRSXF Pitched Roof Junction Detail

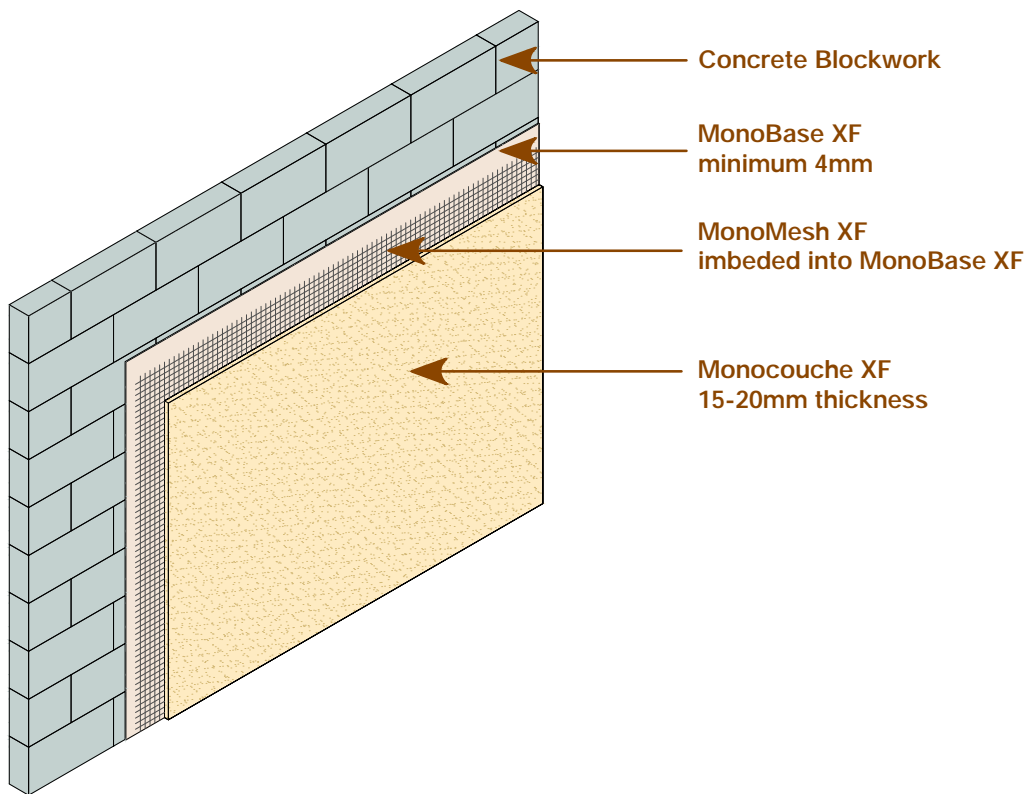
MRSXF Flat Roof Junction Detail

MRSXF Brickwork Plinth Detail

MRSXF Brickwork Plinth & Leadwork Detail

MRSXF Monocouche XF Below DPC Detail

Monocouche XF Best Practice – Best Practice Installation



This detail is offered free of charge as guidance to best practice.

Monocouche Render Systems Ltd owe no duty of care to the recipient of this information, it is the responsibility of the project designer to confirm that it meets the specific project requirements.

DWG TITLE	Monocouche XF Best Practice – Best Practice Installation
ISSUE	Issue 05 – September 2023
SCALE	NTS

## Installation Guide

**MONOCOUCHE XF**  
Through colour Cement based render system

# Monocouche XF Direct "One Coat" Installation Guide

### MASONRY APPLICATION – ONE COAT

Monocouche XF can be applied in one coat onto suitable open faced 7kn general purpose concrete blockwork.

The masonry substrate should be constructed with a sufficient movement control design containing bed joint reinforcement and or expansion joints as per masonry manufacturers guidelines and in conjunction with BS 5628-3 Code of practice for use of masonry and BS 6093 Code of practice for design of joints and jointing in building construction.

The key to a successful one coat installation relies on the selection of a suitable block type, the management and control of materials and workmanship during the construction of the substrate and the inclusion of a suitable movement control design to ensure that the blockwork performs as it should when constructed.

Further guidance on constructing to receive Monocouche XF render in one coat can be found within the XF Construction Guide.

System: Monocouche XF

Colour: To be confirmed

Build up: Direct (One coat) onto suitably constructed blockwork

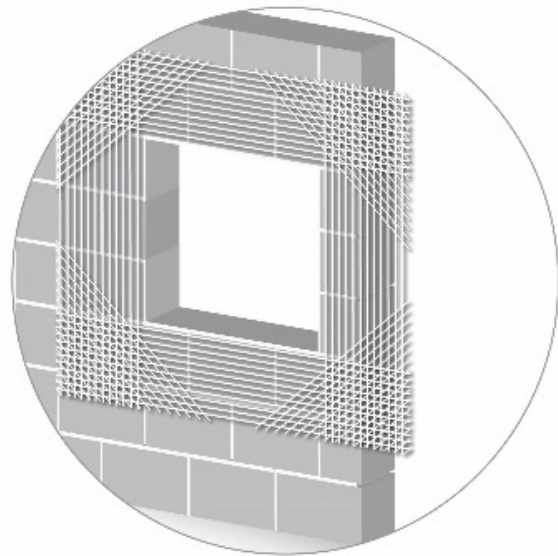
15mm UPVC beads bonded using Monocouche XF or MonoBase XF material only

MonoMesh XF is imbedded into a layer of Monocouche XF to surround openings passing edges by 500mm

A second layer of MonoMesh XF is imbedded diagonally passing all corners by 300mm to further reinforce this area

Monocouche XF is hand or machine applied in the desired finish style level with the UPVC beading

Total system thickness: 15mm + depth of bead bedding material



MonoMesh XF alkali resistant mesh is imbedded into the Monocouche XF or MonoBase XF at material junctions and surrounding openings to absorb stress.

Diagonal strips of MonoMesh XF (stress patches) are added to further reinforce across the corners of openings.

System supplier: Monocouche Render Systems Ltd

Contact: 0330 111 1467 / [info@monocouche.co.uk](mailto:info@monocouche.co.uk) / [www.monocouche.co.uk](http://www.monocouche.co.uk)

Comprehensive technical information and support can be found at [www.monocouche.co.uk](http://www.monocouche.co.uk)

It is advised that Monocouche Render Systems Ltd is consulted to gain a complete understanding of the system prior to commencement of works at site.

Samples: Available upon request

# MONOCOUCHE

RENDER SYSTEMS

## Monocouche XF Render Thickness Guidance (Based on NHBC Exposure Map)

**MONOCOUCHE XF**  
Through colour Cement based render system

Exposure levels for buildings are calculated using a method defined in cycles of wet and drying conditions called spells and are measured in litres/m<sup>2</sup> /spell. As part of the process, consideration should be given to location, orientations and surrounding environment, such as exposure to the force of wind and rain combined with protection from overhangs or surrounding buildings.



Recommended minimum thickness of Monocouche XF render system based on exposure zones

- Sheltered – 15mm
- Moderate – 15mm
- Severe – 15mm
- Very Severe – 20mm

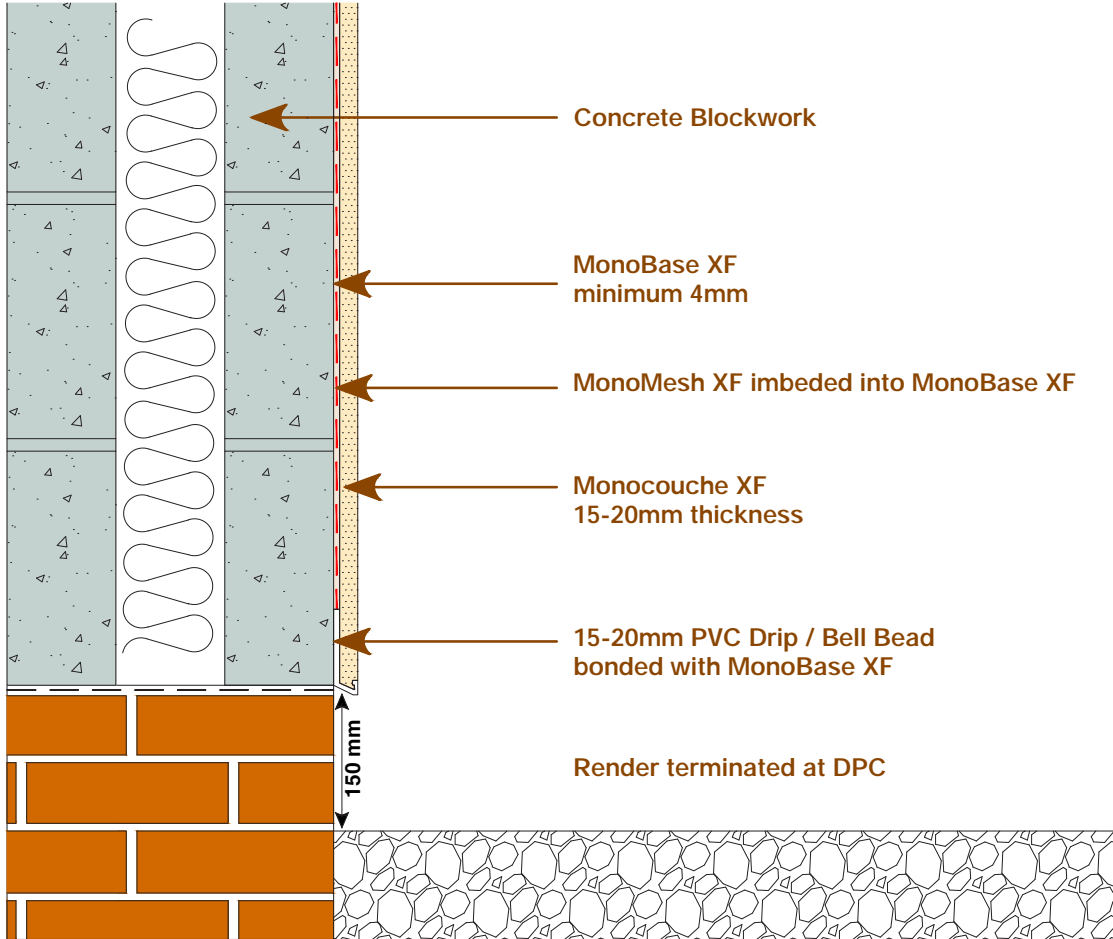
Exposure zones	Exposure to wind-driven rain (litres/m <sup>2</sup> per spell)
Very severe	100 or more
Severe	56.5 to less than 100
Moderate	33 to less than 56.5
Sheltered	Less than 33

### Monocouche Render Systems

Unit B7, Phoenix Industrial Estate, Rosslyn Crescent, Harrow, HA1 2SP  
T: 0330 111 1467 E: info@monocouche.co.uk W: www.monocouche.co.uk



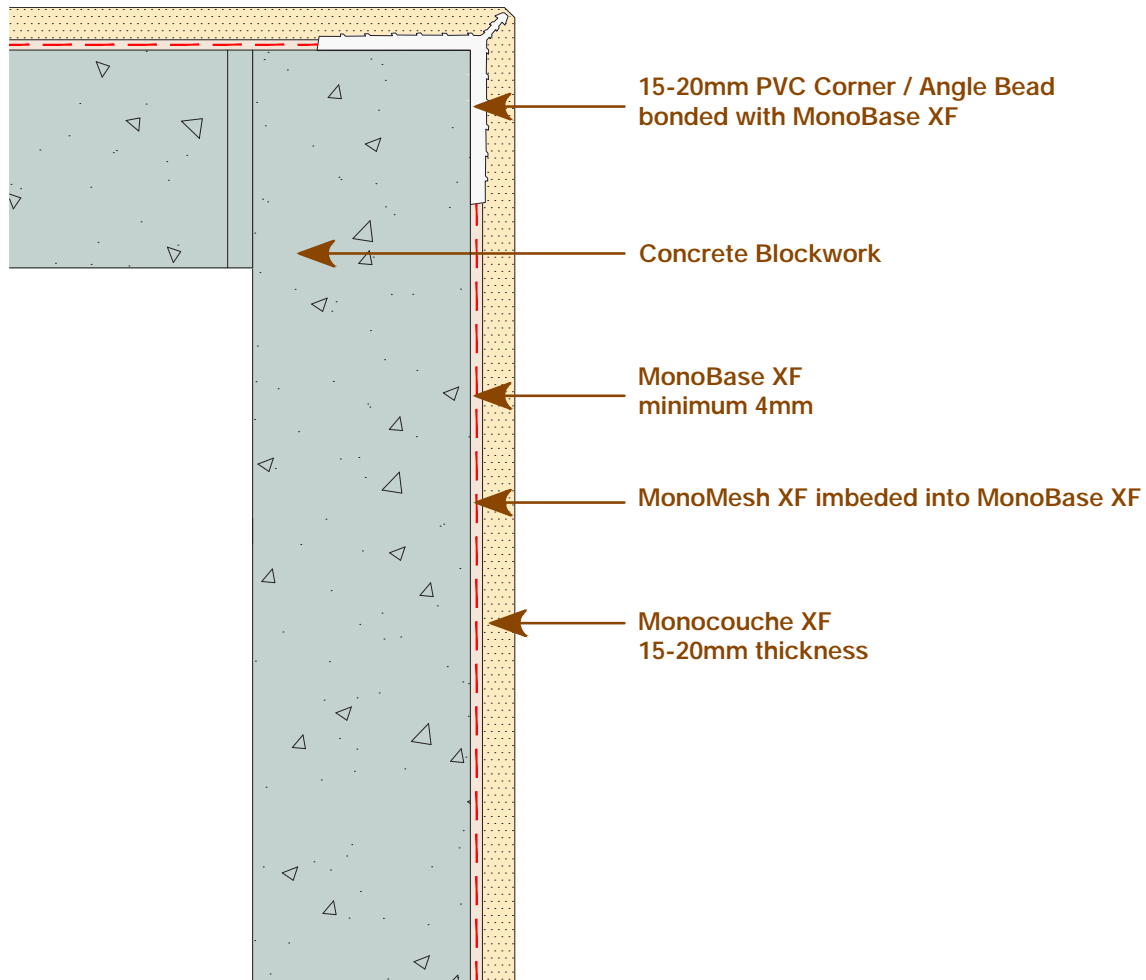
Monocouche XF Best Practice – Base Bead Detail



This detail is offered free of charge as guidance to best practice.  
 Monocouche Render Systems Ltd owe no duty of care to the recipient of this information, it is the responsibility of the project designer to confirm that it meets the specific project requirements.

DWG TITLE	Monocouche XF Best Practice – Base Bead Detail
ISSUE	Issue 05 – September 2023
SCALE	NTS

Monocouche XF Best Practice – External Corner Detail

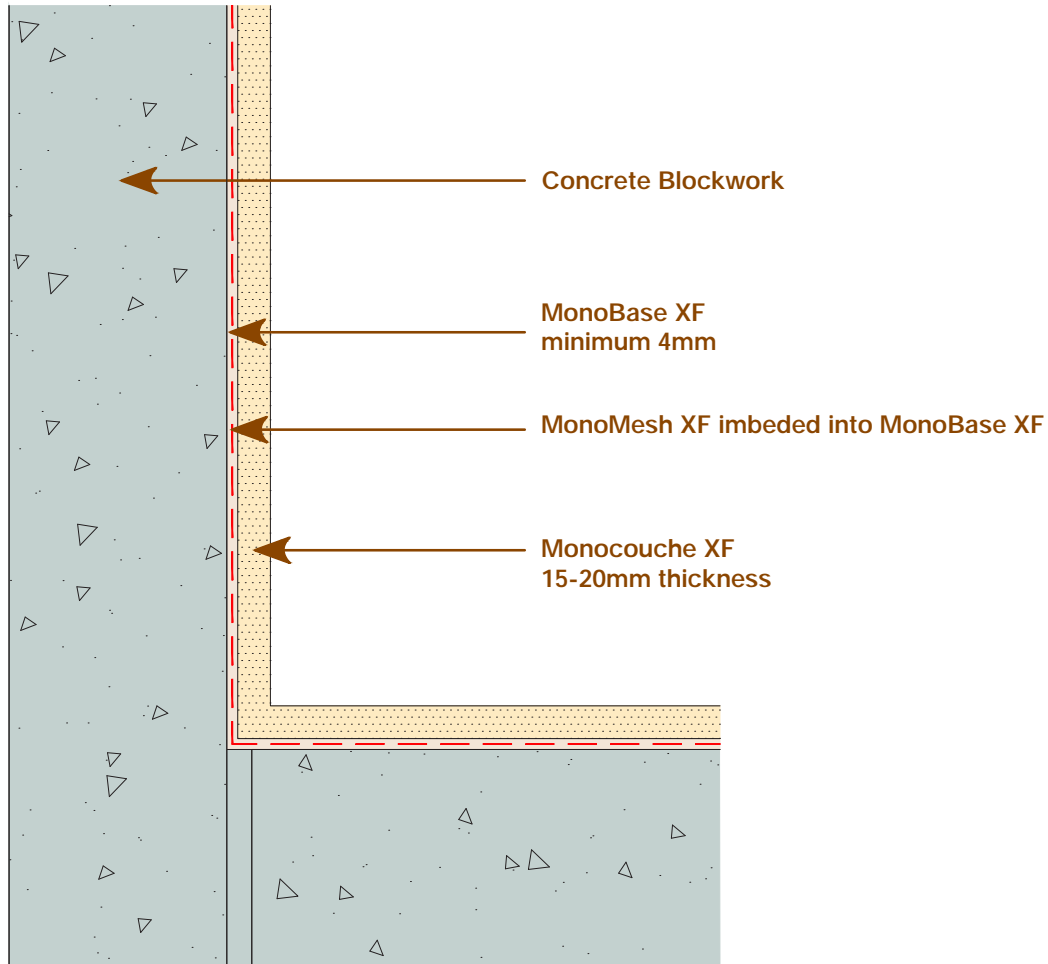


This detail is offered free of charge as guidance to best practice.

Monocouche Render Systems Ltd owe no duty of care to the recipient of this information, it is the responsibility of the project designer to confirm that it meets the specific project requirements.

DWG TITLE	Monocouche XF Best Practice – External Corner Detail
ISSUE	Issue 05 – September 2023
SCALE	NTS

Monocouche XF Best Practice – Internal Corner Detail

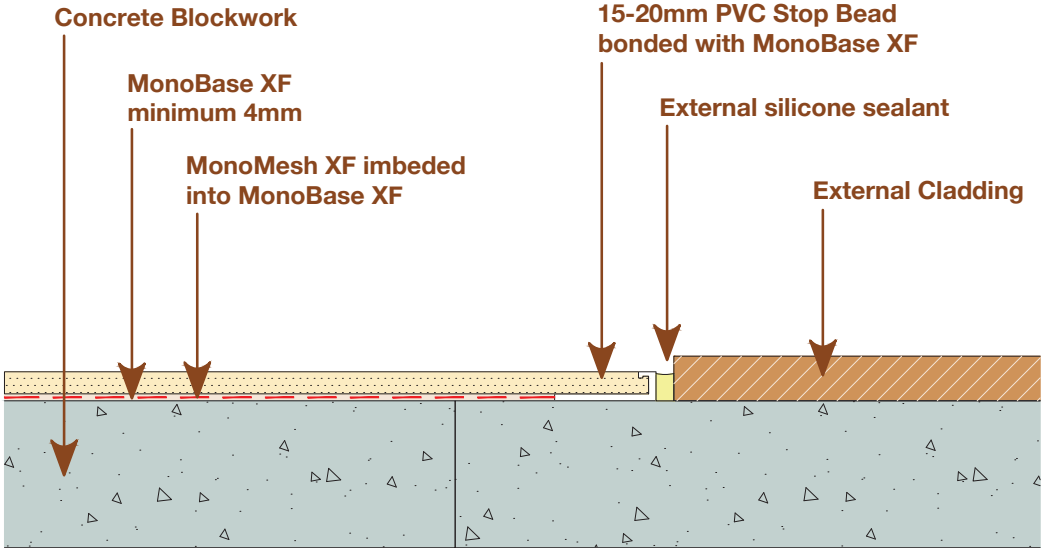


This detail is offered free of charge as guidance to best practice.

Monocouche Render Systems Ltd owe no duty of care to the recipient of this information, it is the responsibility of the project designer to confirm that it meets the specific project requirements.

DWG TITLE	Monocouche XF Best Practice – Internal Corner Detail
ISSUE	Issue 05 – September 2023
SCALE	NTS

Monocouche XF Best Practice – Render Stop / Material Junction Detail

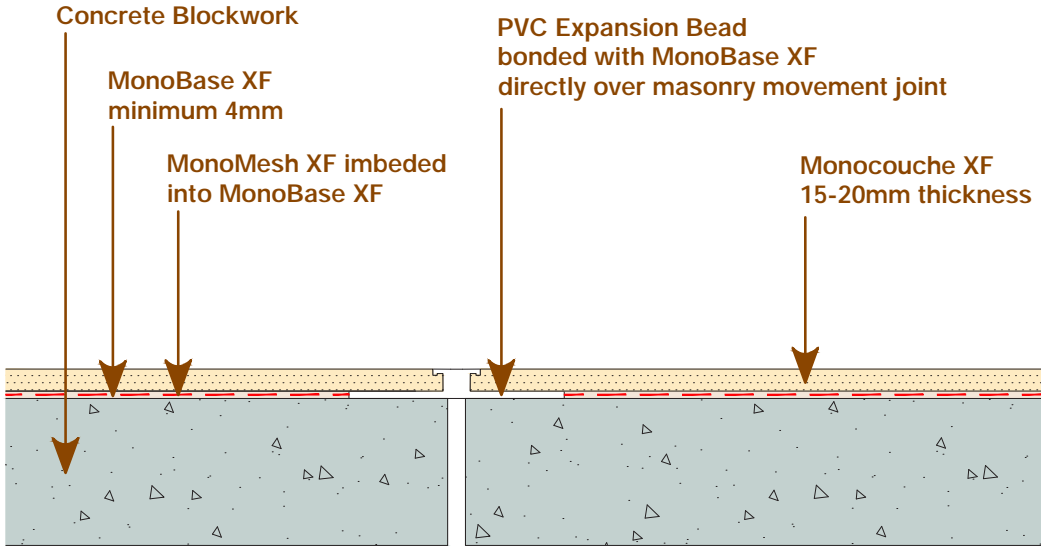


This detail is offered free of charge as guidance to best practice.  
 Monocouche Render Systems Ltd owe no duty of care to the recipient of this information, it is the responsibility of the project designer to confirm that it meets the specific project requirements.

DWG TITLE	Monocouche XF Best Practice – Render Stop / Material Junction Detail
ISSUE	Issue 05 – September 2023
SCALE	NTS



Monocouche XF Best Practice – Movement Joint Detail

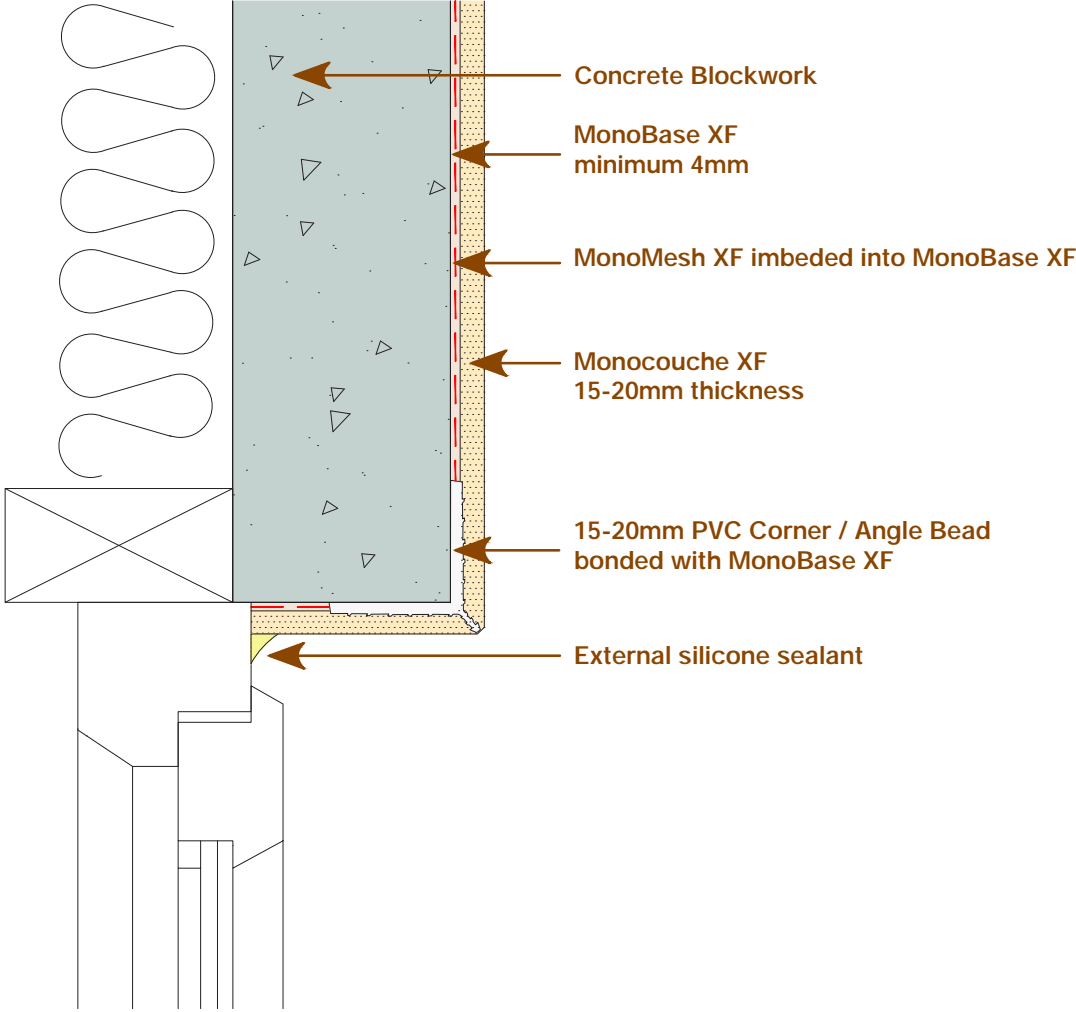


This detail is offered free of charge as guidance to best practice.  
 Monocouche Render Systems Ltd owe no duty of care to the recipient of this information, it is the responsibility of the project designer to confirm that it meets the specific project requirements.

DWG TITLE	Monocouche XF Best Practice – Movement Joint Detail
ISSUE	Issue 05 – September 2023
SCALE	NTS



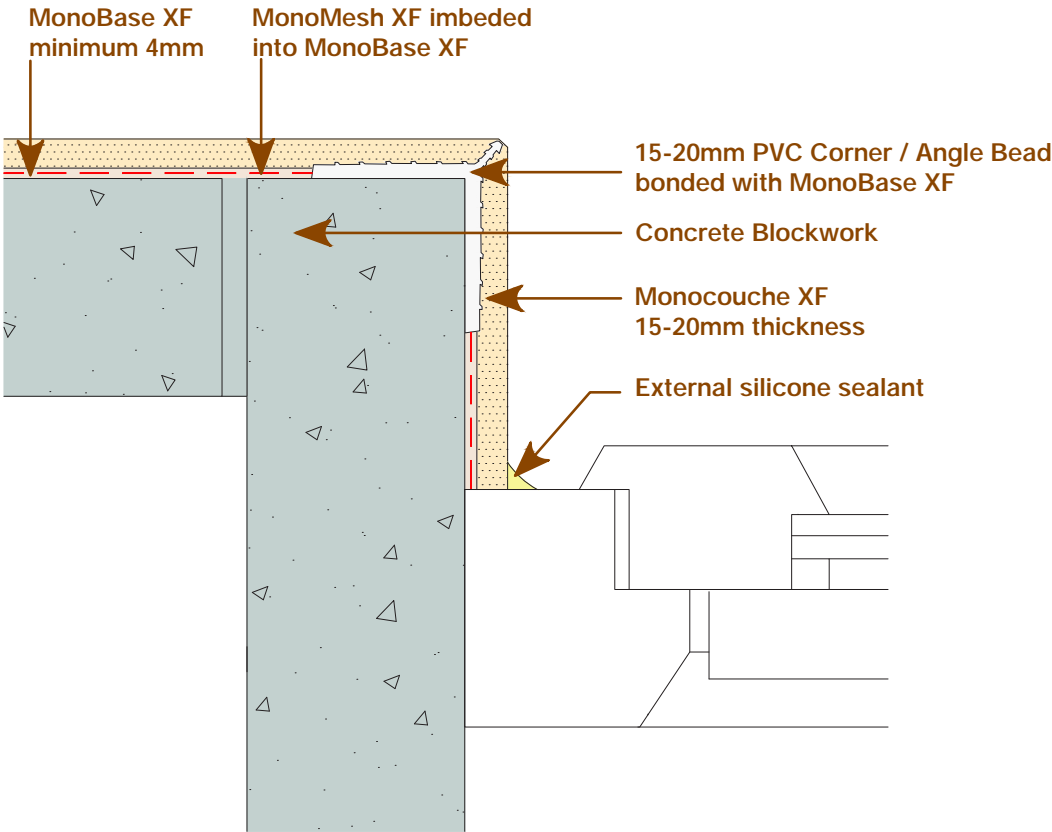
Monocouche XF Best Practice – Window / Door Head Detail



This detail is offered free of charge as guidance to best practice.  
 Monocouche Render Systems Ltd owe no duty of care to the recipient of this information, it is the responsibility of the project designer to confirm that it meets the specific project requirements.

DWG TITLE	Monocouche XF Best Practice – Window / Door Head Detail
ISSUE	Issue 05 – September 2023
SCALE	NTS

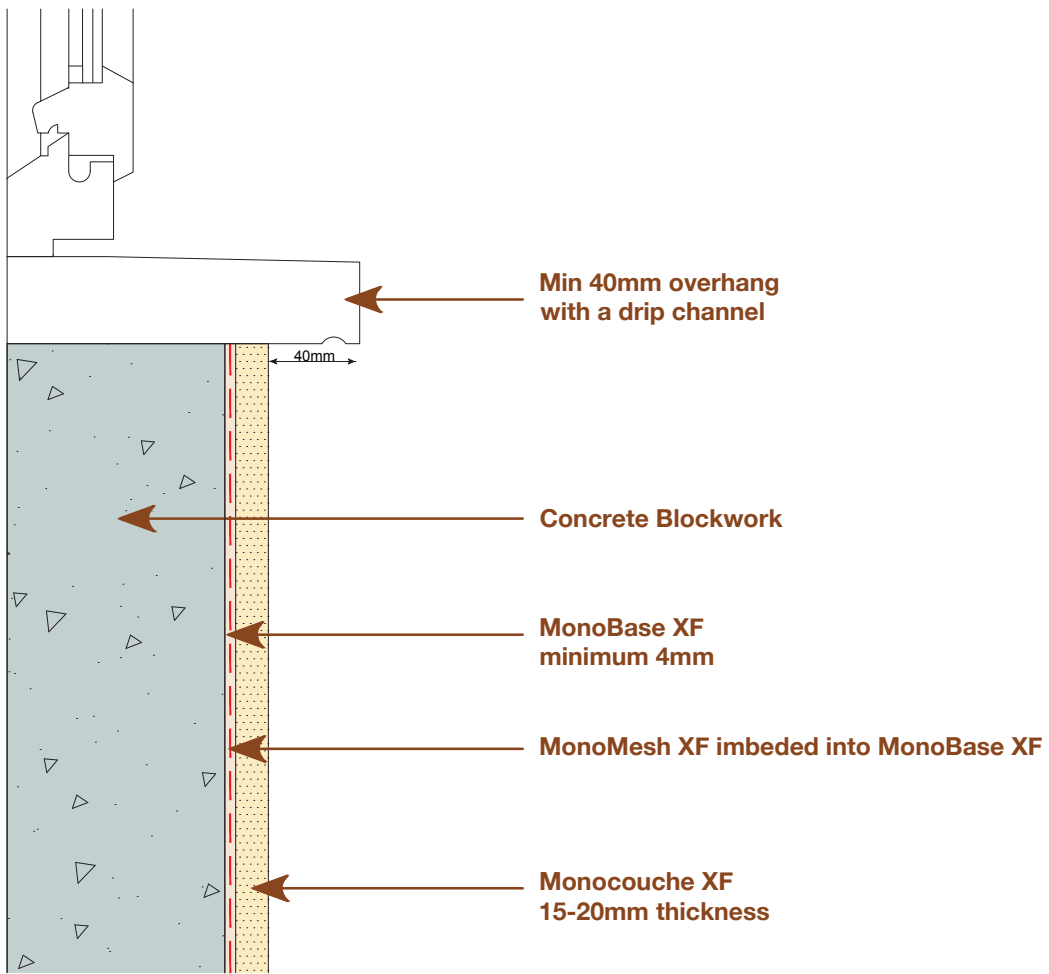
Monocouche XF Best Practice – Window / Door Jam Detail



This detail is offered free of charge as guidance to best practice. Monocouche Render Systems Ltd owe no duty of care to the recipient of this information, it is the responsibility of the project designer to confirm that it meets the specific project requirements.

DWG TITLE	Monocouche XF Best Practice – Window / Door Jam Detail
ISSUE	Issue 05 – September 2023
SCALE	NTS

Monocouche XF Best Practice – Window Cill Detail

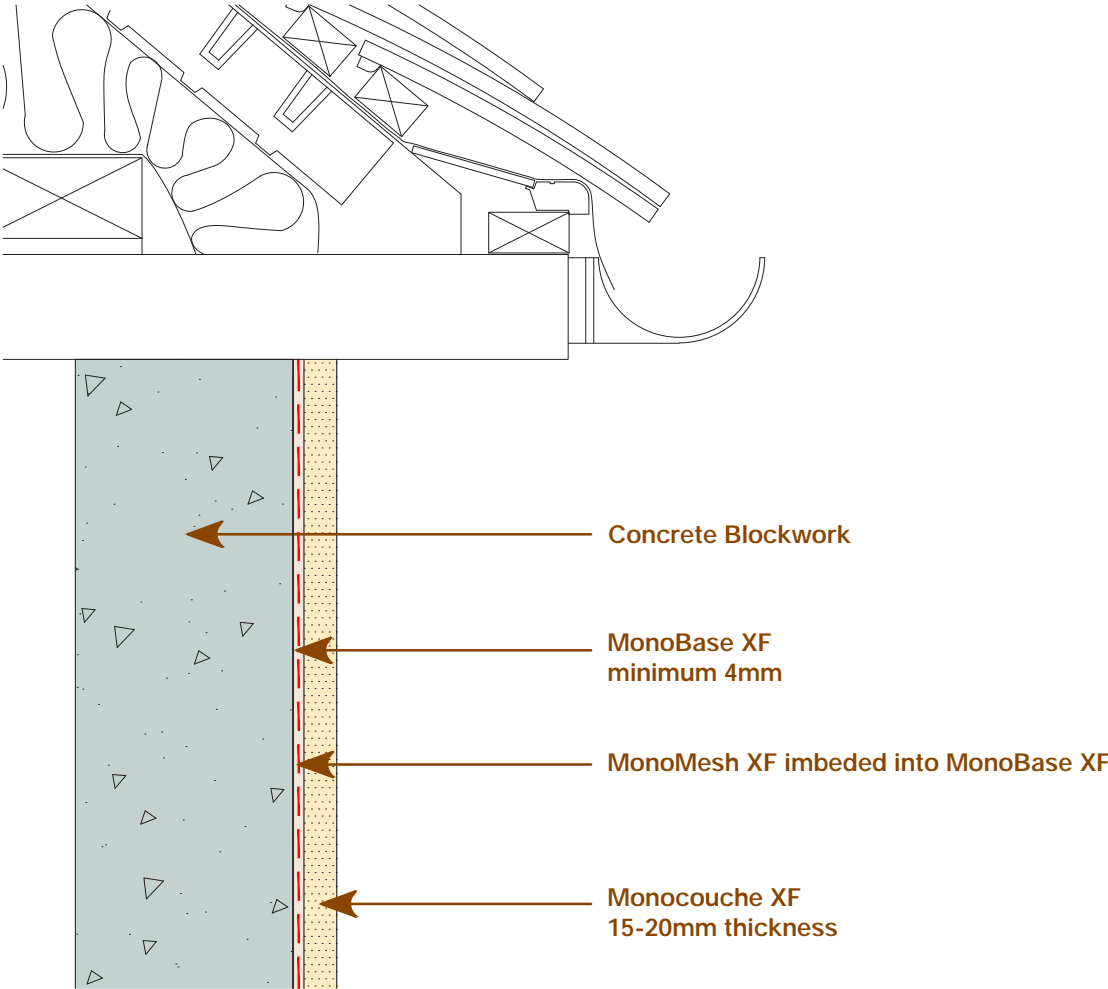


This detail is offered free of charge as guidance to best practice.  
 Monocouche Render Systems Ltd owe no duty of care to the recipient of this information, it is the responsibility of the project designer to confirm that it meets the specific project requirements.

DWG TITLE	Monocouche XF Best Practice – Window Cill Detail
ISSUE	Issue 05 – September 2023
SCALE	NTS



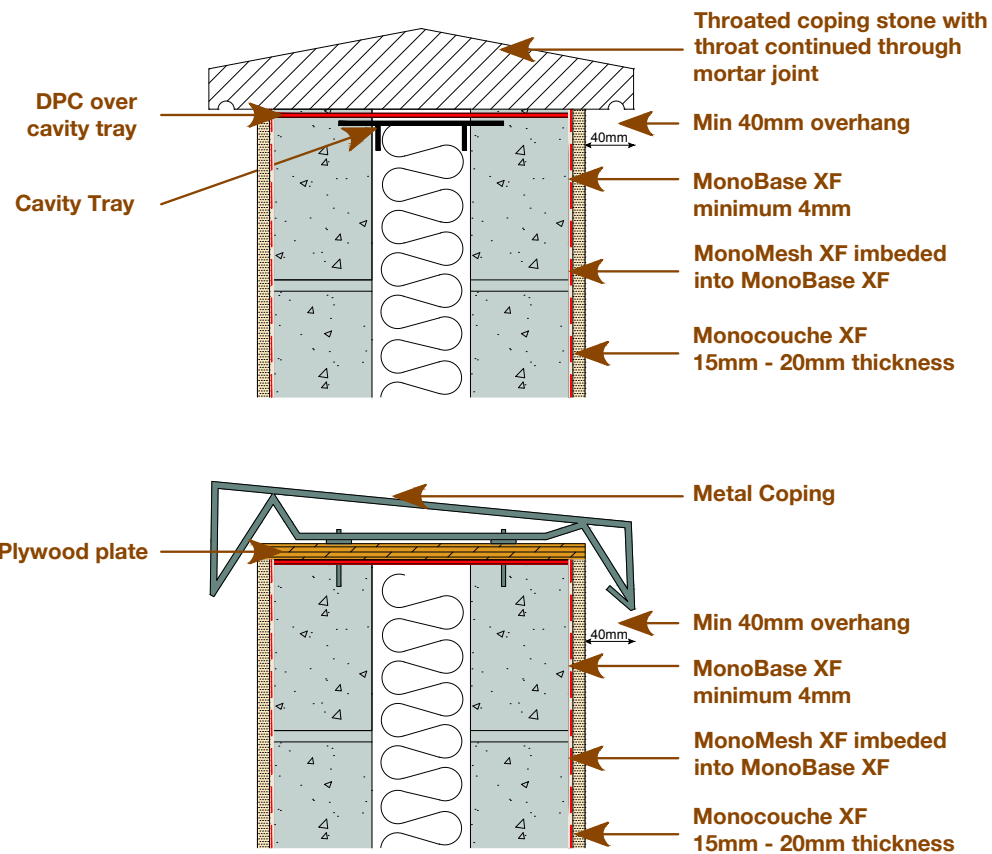
Monocouche XF Best Practice – Soffit Junction Detail



This detail is offered free of charge as guidance to best practice.  
 Monocouche Render Systems Ltd owe no duty of care to the recipient of this information, it is the responsibility of the project designer to confirm that it meets the specific project requirements.

DWG TITLE	Monocouche XF Best Practice – Soffit Junction Detail
ISSUE	Issue 05 – September 2023
SCALE	NTS

Monocouche XF Best Practice – Coping’s & Capping’s

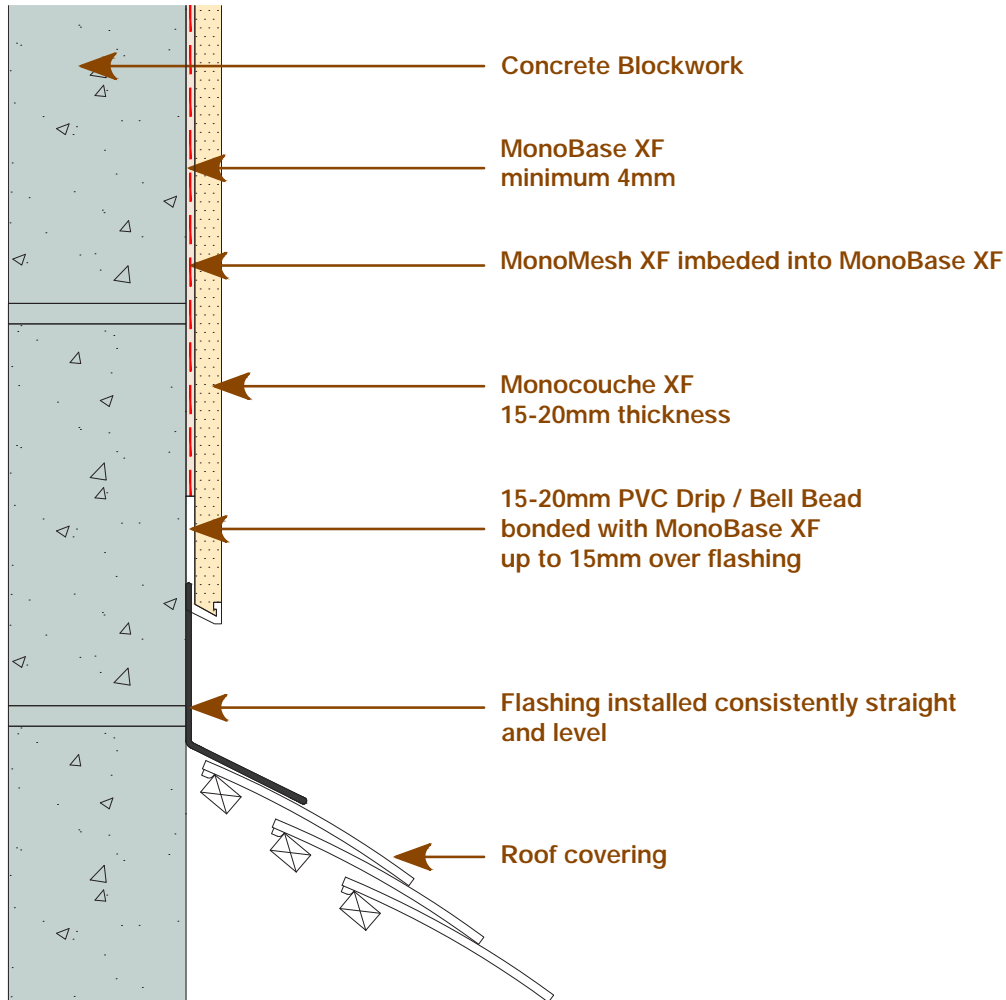


This detail is offered free of charge as guidance to best practice.

Monocouche Render Systems Ltd owe no duty of care to the recipient of this information, it is the responsibility of the project designer to confirm that it meets the specific project requirements.

DWG TITLE	Monocouche XF Best Practice – Coping’s and Capping’s
ISSUE	Issue 05 – September 2023
SCALE	NTS

Monocouche XF Best Practice – Pitched Roof Junction Detail

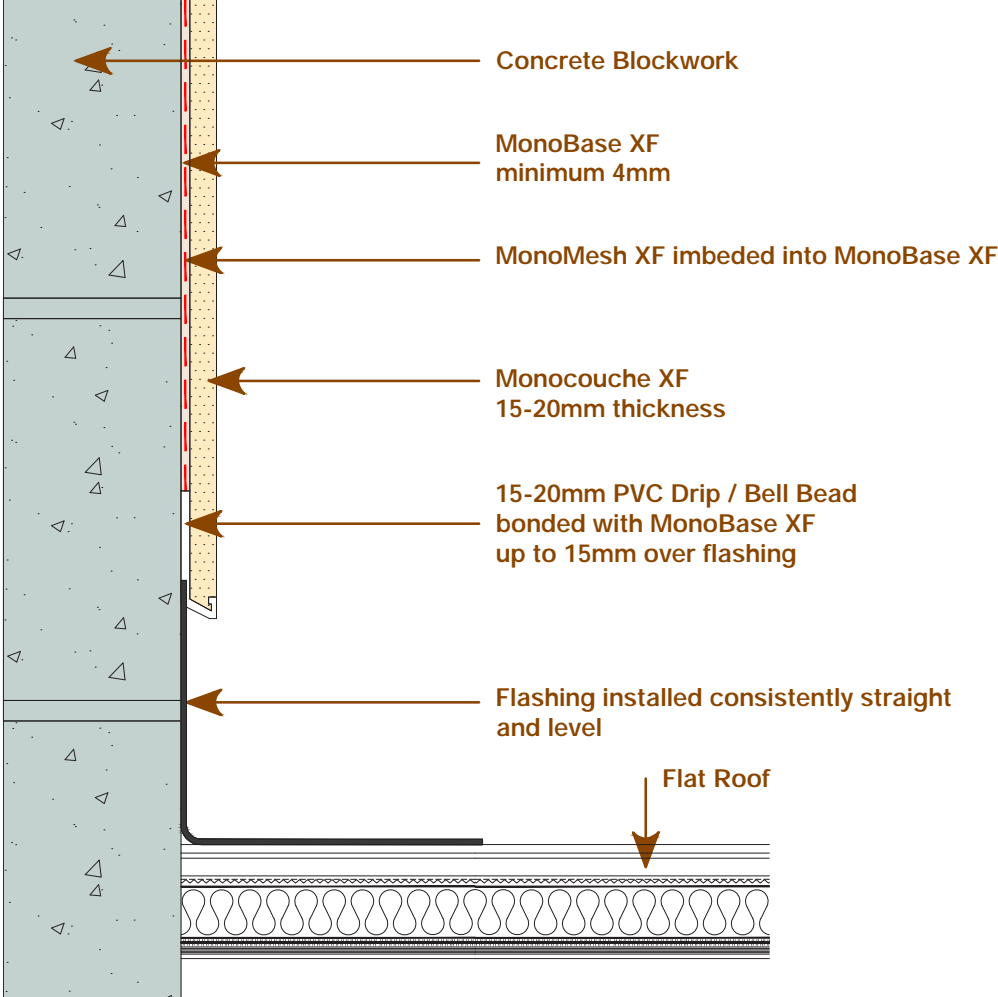


This detail is offered free of charge as guidance to best practice.

Monocouche Render Systems Ltd owe no duty of care to the recipient of this information, it is the responsibility of the project designer to confirm that it meets the specific project requirements.

DWG TITLE	Monocouche XF Best Practice – Pitched Roof Junction Detail
ISSUE	Issue 05 – September 2023
SCALE	NTS

Monocouche XF Best Practice – Flat Roof Junction Detail

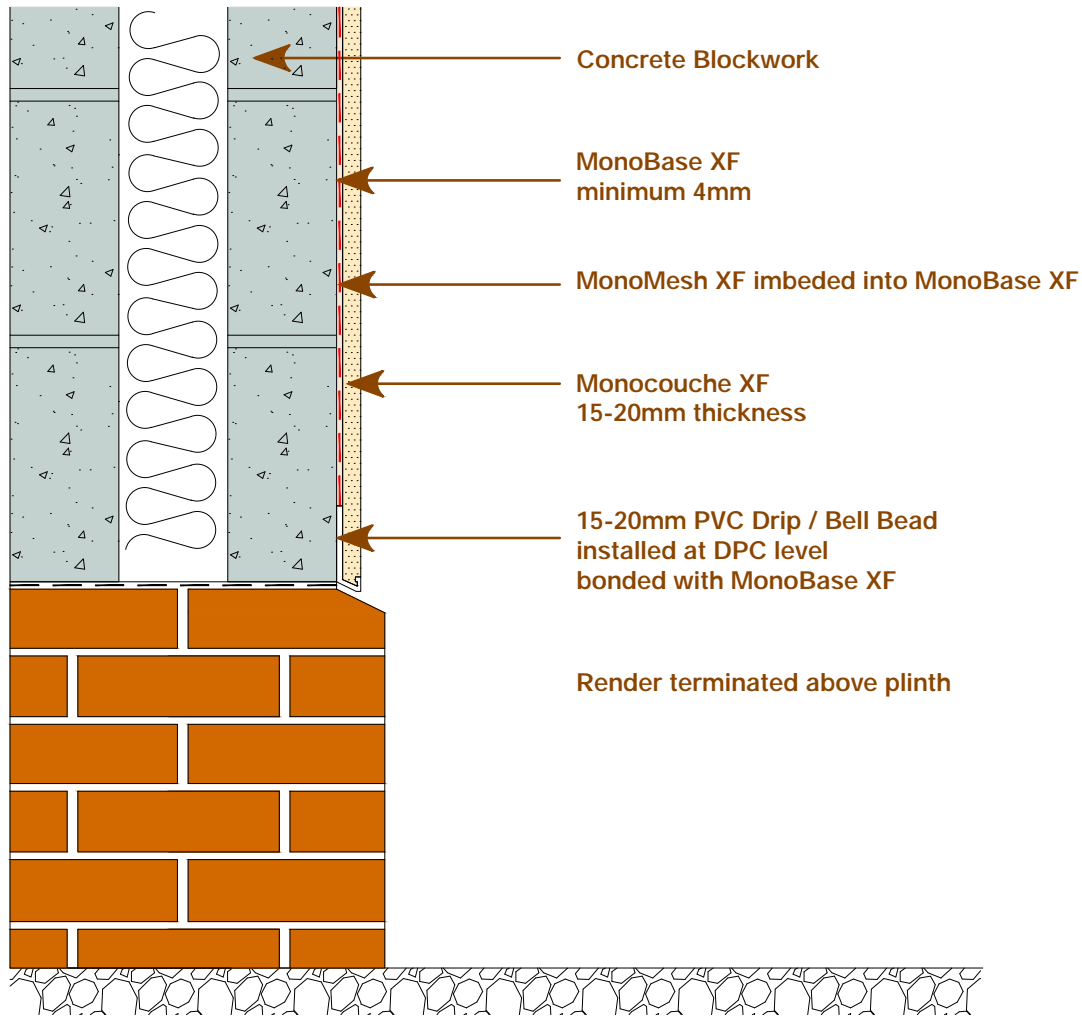


This detail is offered free of charge as guidance to best practice.  
 Monocouche Render Systems Ltd owe no duty of care to the recipient of this information, it is the responsibility of the project designer to confirm that it meets the specific project requirements.

DWG TITLE	Monocouche XF Best Practice – Flat Roof Junction Detail
ISSUE	Issue 05 – September 2023
SCALE	NTS



Monocouche XF Best Practice – Brickwork Plinth Detail

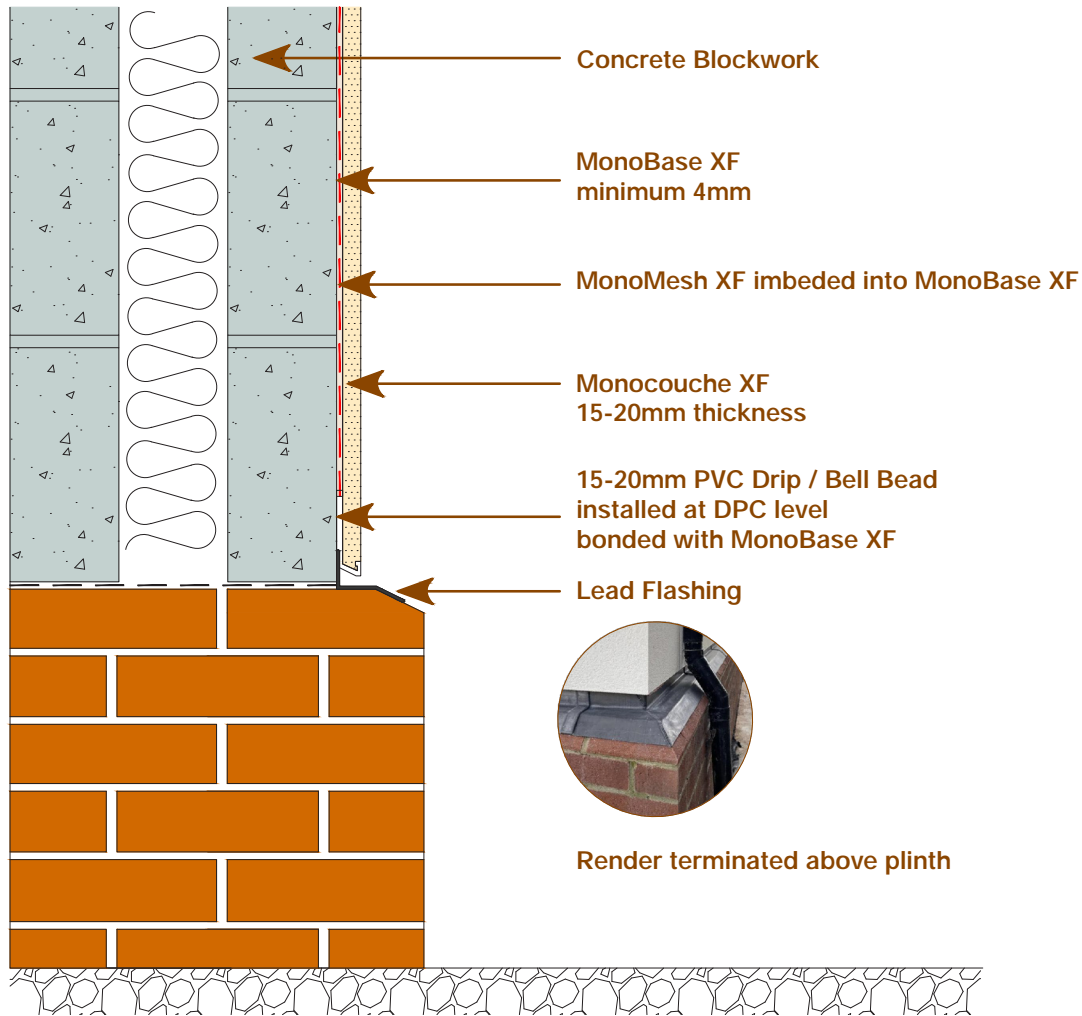


This detail is offered free of charge as guidance to best practice.

Monocouche Render Systems Ltd owe no duty of care to the recipient of this information, it is the responsibility of the project designer to confirm that it meets the specific project requirements.

DWG TITLE	Monocouche XF Best Practice – Brickwork Plinth Detail
ISSUE	Issue 05 – September 2023
SCALE	NTS

Monocouche XF Best Practice – Brickwork Plinth & Leadwork Detail

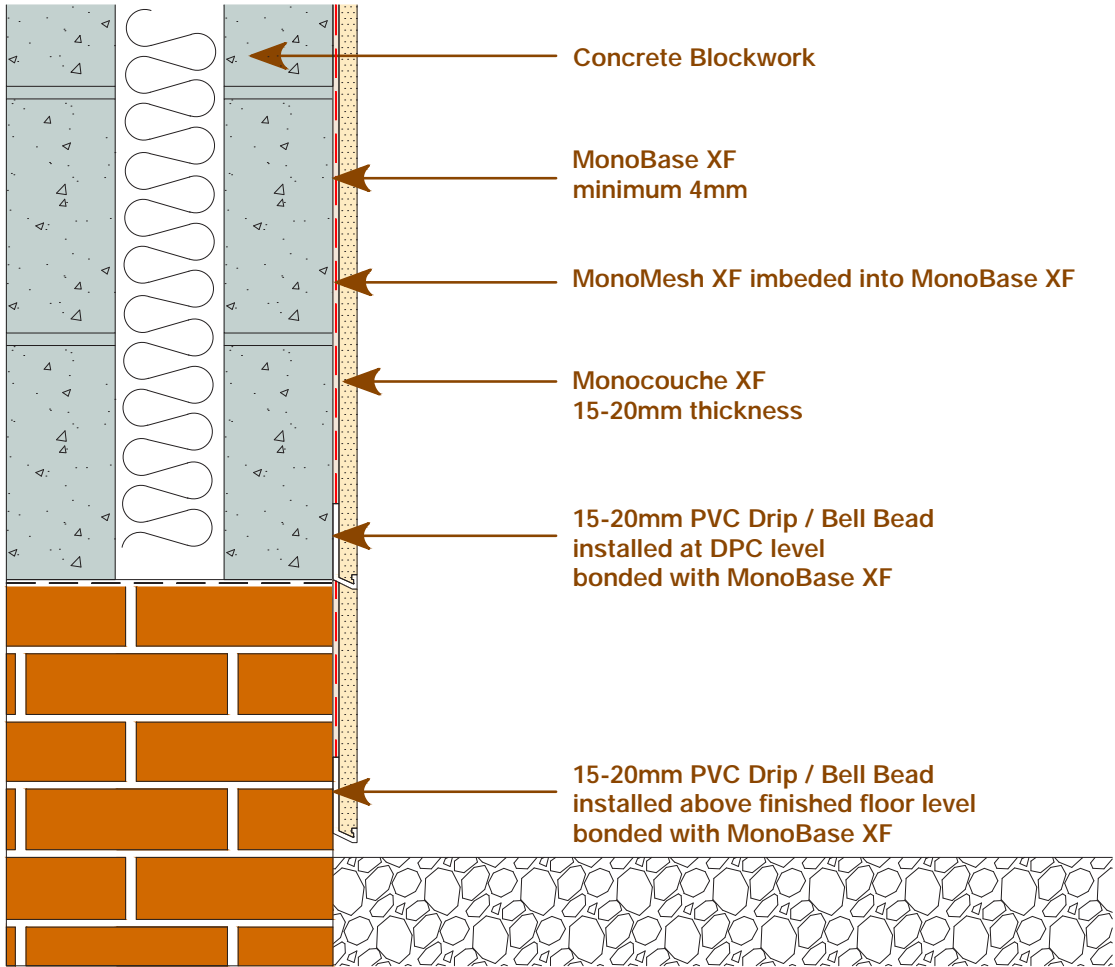


This detail is offered free of charge as guidance to best practice.  
 Monocouche Render Systems Ltd owe no duty of care to the recipient of this information, it is the responsibility of the project designer to confirm that it meets the specific project requirements.

DWG TITLE	Monocouche XF Best Practice – Brickwork Plinth & Leadwork Detail
ISSUE	Issue 05 – September 2023
SCALE	NTS



**Monocouche XF Best Practice – Monocouche XF Below DPC Detail**  
**Monocouche XF is not warrantied below DPC, install below DPC at own risk**



This detail is offered free of charge as guidance to best practice. Monocouche Render Systems Ltd owe no duty of care to the recipient of this information, it is the responsibility of the project designer to confirm that it meets the specific project requirements.

DWG TITLE	Monocouche XF Best Practice – Monocouche XF Below DPC – No Warranty
ISSUE	Issue 05 – September 2023
SCALE	NTS

# MONOCOUCHE

RENDER SYSTEMS



## Monocouche Render Systems

Unit B7, Phoenix Industrial Estate, Rosslyn Crescent, Harrow, HA1 2SP

T: 0330 111 1467 E: [info@monocouche.co.uk](mailto:info@monocouche.co.uk) W: [www.monocouche.co.uk](http://www.monocouche.co.uk)

